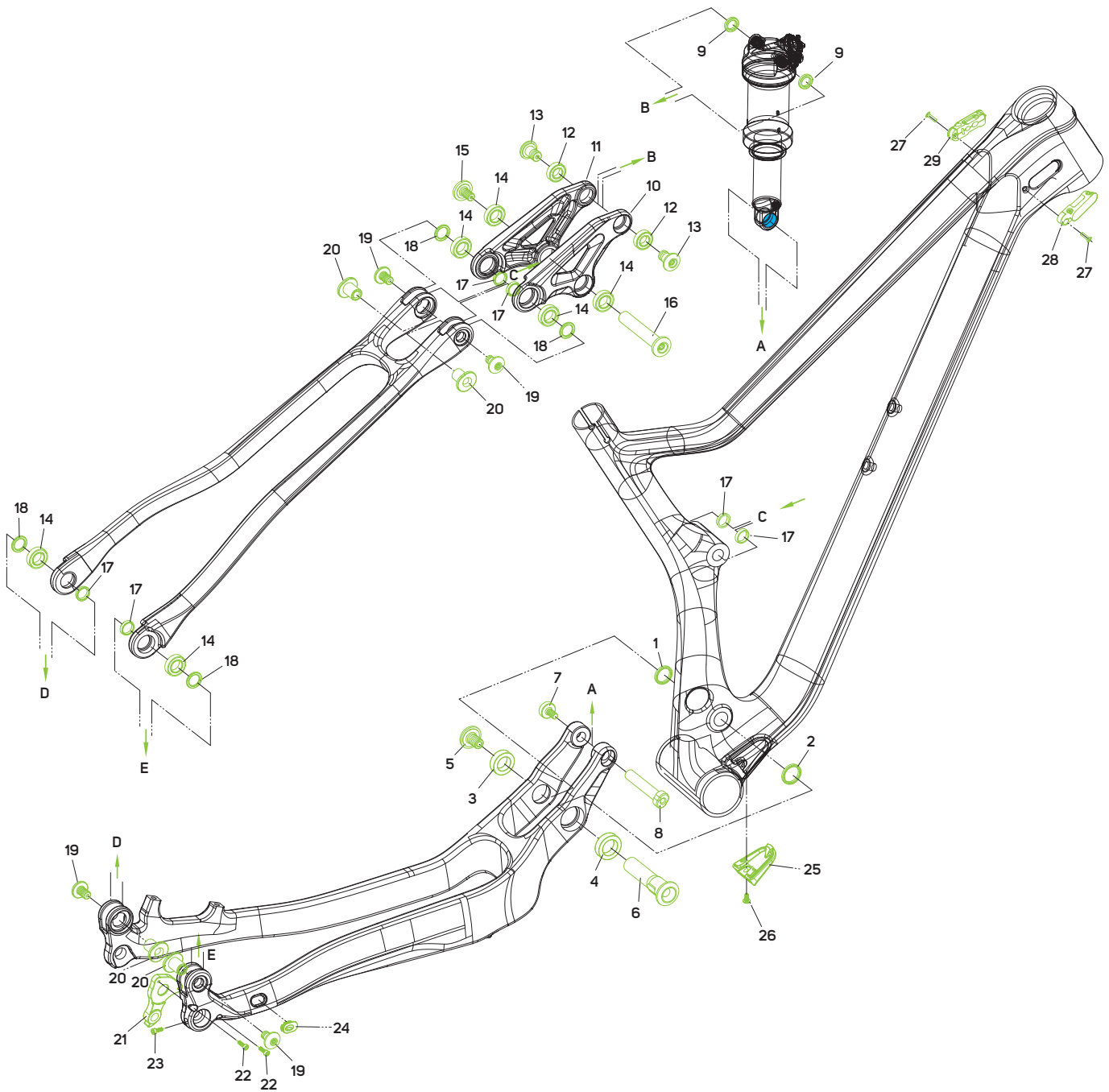


SHAFT EYELET

● BODY EYELET

mm	PIN WIDTH	PIN ID	PIN WIDTH	PIN ID
185 x 55 mm	-	-	40 mm	10 mm

Recommended SAG: 25-30%



No.	Item No.	Item	Detail information	Pieces	Torque Nm	No.	Item No.	Item	Detail information	Pieces	Torque Nm
1	2294001180	WASHER		1		16	2300012941	BOLT		1	
2	2294004882	WASHER		1		17	2294002255	WASHER		6	
3	2221002191	BEARING	3802V-2RD 24D*15D*7W	1		18	2294004956	WASHER		4	
4	2221002340	BEARING	172607V 26D*17D*7W	1		19	2300013254	SCREW		4	14
5	2300012907	SCREW		1	18	20	2300013265	BOLT		4	
6	2300012899	BOLT		1		21	2311004928	DROPOUT	DH-053 (see page 608)	1	
7	2300013812	SCREW		1	12	22	2300009458	SCREW		2	4
8	2300013801	BOLT		1		23	2300005272	SCREW		1	5
9	2294004633	WASHER		2		24	2258003801	CABLE GUIDE		1	
10	-	ROCKER		1		25	2258003867	CABLE GUIDE		1	
11	-	ROCKER		1		26	2300012253	SCREW		1	
12	2221002254	BEARING	6800V-2RS 19D*10D*5W	2		27	2300011412	SCREW		2	4
13	2300012918	SCREW		2		28		SMART ENTRY	(see page 606)		
14	2221002265	BEARING	6801V-2RS 21D*12D*5W	6		29		SMART ENTRY	(see page 606)		
15	2300012952	SCREW		1	14						