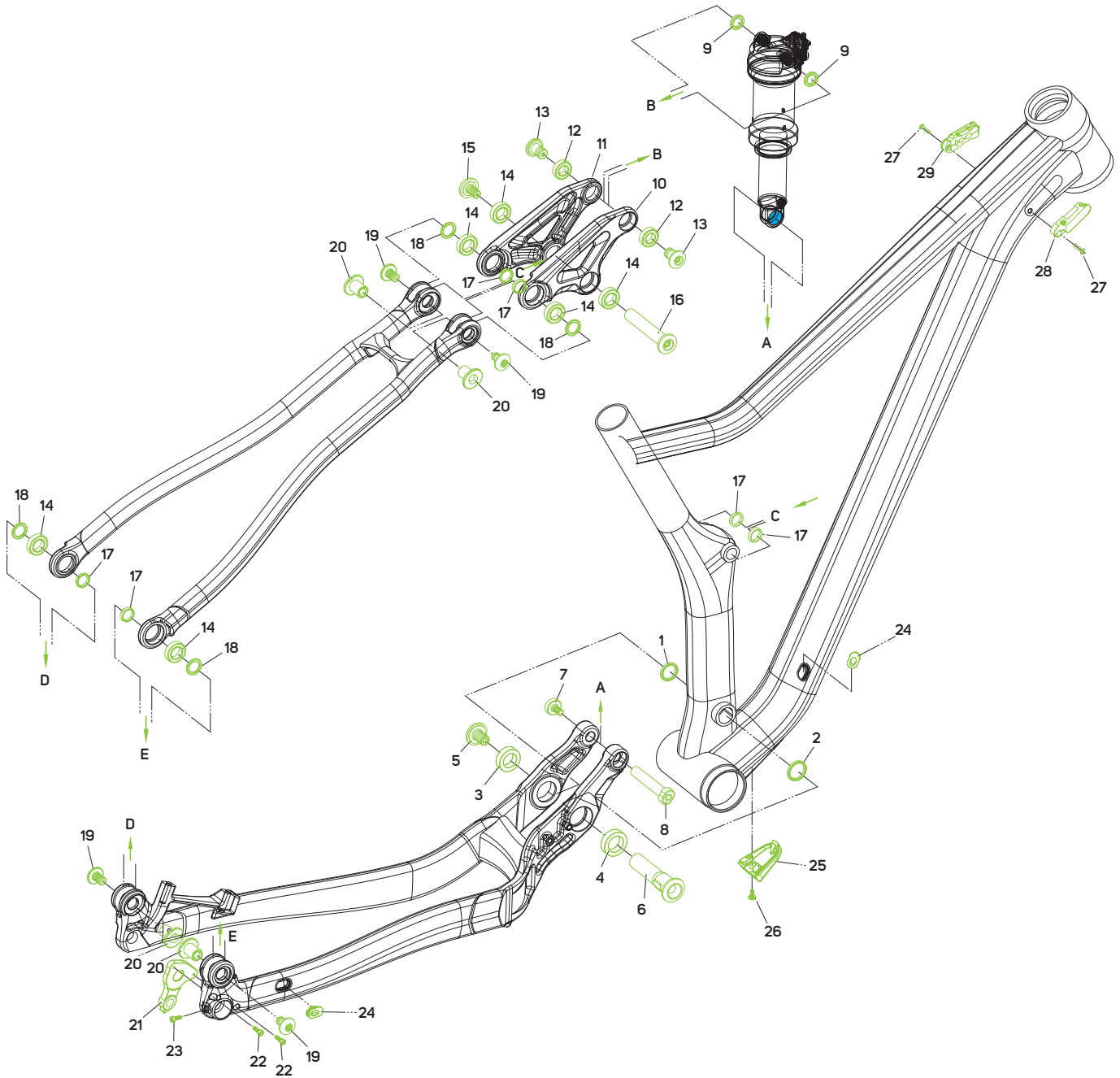


SHAFT EYELET

● BODY EYELET

mm	PIN WIDTH	PIN ID	PIN WIDTH	PIN ID
185 x 55 mm	-	-	40 mm	10 mm

Recommended SAG: 25-30%



No.	Item No.	Item	Detail information	Pieces	Torque Nm
1	2294001180	WASHER		1	
2	2294004882	WASHER		1	
3	2221002191	BEARING	3802V-2RD 24D*15D*7W	1	
4	2221002340	BEARING	172607V 26D*17D*7W	1	
5	2300012907	SCREW		1	18
6	2300012899	BOLT		1	
7	2300013812	SCREW		1	12
8	2300013801	BOLT		1	
9	2294004633	WASHER		2	
10	-	ROCKER		1	
11	-	ROCKER		1	
12	2221002254	BEARING	6800V2RS 19D*10D*5W	2	
13	2300012918	SCREW		2	
14	2221002265	BEARING	6801V-2RS 21D*12D*5W	6	
15	2300012952	SCREW		1	14

No.	Item No.	Item	Detail information	Pieces	Torque Nm
16	2300012941	BOLT		1	
17	2294002255	WASHER		6	
18	2294004956	WASHER		4	
19	2300013254	SCREW		4	14
20	2300013265	BOLT		4	
21	2311004928	DROPOUT	DH-053 (see page 608)	1	
22	2300009458	SCREW		2	4
23	2300005272	SCREW		1	5
24	2258003812	CABLE GUIDE		2	
25	2258003867	CABLE GUIDE		1	
26	2300012253	SCREW		1	
27	2300011412	SCREW		2	4
28		SMART ENTRY	(see page 606)		
29		SMART ENTRY	(see page 606)		